

# Cox & Cox

## LIGHTING | BUYING GUIDE

The right lighting can uplift and transform any room; adding life to dull corners and injecting personality and style into your space. Our eclectic lighting selection has everything from antiqued table lamps, to oversized pendants, all designed to create the look you want.

Our lights come with a variety of fixtures and fitting, plugs and bulbs, so we've created this helpful guide to make updating your lighting easier for you.



### CABLES

Take a look at the product information on our website to find out whether our light features a cable or flex.

Here you will be able to find information on the colour, length and switch. Use this information to decide where to position your light and ensure you have a socket or fitting available.

### PLUGS

We have carefully sourced our selection of decorative and statement lights from around the world. We make sure that all of our lights adhere to UK standards, and feature a UK Plug or adaptor making them suitable for your home.

### BULBS

Most of our lights do not include a bulb, so refer to the product information on our website to find out which bulb type and wattage you will need. There are four main bulb types:

- B22 - BC** (bayonet cap)
- E27 - ES** (Edison screw)
- E14 - SES** (small Edison screw)
- GU10** (twist-lock)

Energy saving bulbs may also be used in our lights. The table below explains the equivalent energy saving wattage.

INCANDESCENT WATTAGE	ENERGY SAVING WATTAGE (CFL)
100W	20W
75W	15W
60W	11W
40W	9W
25W	5W

# LIGHTING | BUYING GUIDE

---

## PENDANTS

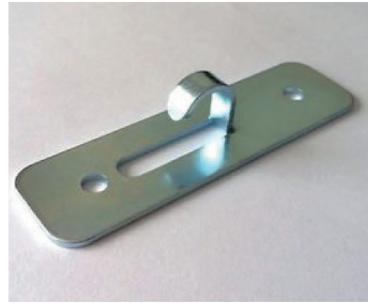
Each of our ceiling pendants needs to be wired into the mains, and so we recommend employing a certified electrician to ensure this is done safely and correctly. Most flexes on our pendants can be height adjusted, so make sure you discuss this with your electrician before fixing.

Some, but not all, of our pendants include a ceiling fitting. You'll find this information on our website but we also recommend speaking a qualified electrician for advice on how to install.

Take a look below at the recommended fixings for pendant lights.



CEILING BRACKET



CEILING HOOK

Please note, the images below are for guidance only as fittings and fixtures come in many varieties.

For further information and advice on all of our lighting products,  
please feel free to contact our customer services team at  
**customerqueries@coxandcox.co.uk** or on **0330 333 2123**

Remember to always seek professional advice when fitting lights.